

Technical Specifications Nede

Youngs



updated 19/02/24

Welcome to Youngs

In this document you will find all technical specifications for our stages and general information about the venue.

You will also find all the contacts you need to advance your show.

We are very much looking forward to accommodate your band and your crew, and hope you will have a good stay with us.

Contact Info:

Booking, music: Emil Rovde
emil@youngs.no

Booking, events: Emilie Hallvardsdatter Østgård
emilie@youngs.no

Booking, DJ: Sofie R. Martinsen
sofie@youngs.no

Technical Manager: Liam Knott
knott_liam@hotmail.com

Venue Manager: Caytie Tennnfjord
caytie@youngs.no

Youngs Nede Stage Specifications

Stage Name: Youngs Nede

Capacity: 480 (450 for concerts)

Performance Area: Width: 6m in the back, 8m in the front

Depth: 5 m

Height to ceiling: 2.65m

Production Area: Side stage production area: 5 x 1,5 meters

FOH: Mobile FOH

Load in / Load Out: Elevator and stairs from street level at Youngstorget to the basement.

Sound Level Restrictions:

The venue must adhere to strict curfews and noise limits. The venue can be prosecuted and/or fined for breaches of this license and permission and ultimately the local authority can review and/or revoke the venue's license.

You must adhere to all noise limits that the venue is subject to. This is a term of our license and all artists who perform at the venue must adhere to any specific instructions to reduce noise levels to those instructed by the venue's authorised representative. You will be responsible for all direct loss(s) resulting in any way from any breach of our noise limits during your performance unless such breach was directly caused by the act, omission or negligence of the venue.

Sound Level Maximum:

The local authorities and the venue management work together in order to control the sound levels at Youngs. Representatives of the local authorities and the festival will measure the dB levels at the FOH desk. In order to comply with the regulations, we ask your co-operation. The absolute maximum is set to 99 dBA with a leq of 30 minutes.

Soundchecks:

No sound checks allowed before 16.00 in the afternoon (Mon-Fri).

Curfew:

No sound allowed in PA after 03.00.

Youngs Nede Sound Specification

PA: Adamson IS10 Line array (8 x 2x10")
Adamson IS219 Sub (4 x 2x19")
Delay/Fill speakes for seating and club sounds

FOH: Allen&Heath dLive C3500
A&H dLive Mixrack DM0

Stage Boxes: 2x A&H DX168 (16 in 8 out)

Monitors: 6 x Martin LE100 stage monitors

Mics / DIs: 2 x Wireless Shure Beta58A
6 x Shure/Countryman Wireless
1 x Shure MX412D/C Table Mic
2 x Shure Beta 58A
6 x Shure SM58
1 x Shure Beta 91A
1 x Shure Beta 52A
2 x Shure KSM1372 Cardioid
3 x Shure Beta 98AMP/C
3 x Shure Beta 181/C
5 x Shure sm57
6 x Klark Teknik DN100 DI
3 x Klark Teknik DN200 Stereo DI
3x Radial Pro D2 Stereo DI
6 x Sennheiser e906

Stage Decks: 4 x 2x1m Nivtec decks with 6 x 20cm legs and 6 x 30cm legs
1 x 2x0.5m Nictec deck on 1m legs

Youngs Nede Light Specification

FOH: Grand MA3 Compact
Grand MA3 OnPC 2 Port Node

Stage Lights: 1 x HAZEBASE Base*Hazer*Pro Hazer
2 x Atomic 3000 EU Strobe
6 x Phantom 180 Wash 12x15W
6 x Showtec 30770 Stage Blinder2
4 x Snow 350 Hybrid

Front lights: 6 x Stairville MH-z195 Smart White CW/WW/A

Dance Floor: 8 x Snow 350 Hybrid

Environment: 10 x SnowPar Pro tri 18

Floor Package: 6 x SnowPar Pro tri 18

Visuals

Stage Front (Covers up stage area):

Projector: 1 x DP-119-734 Digital Projection E-Vision Laser 13000 WUXGA with COLORBOOST + Red Laser

Lens: 1 x P-117-341 Digital Projection 0,381 Fixed Ultra Short Throw Lens

Screen: 462 x 260 cm

Stage Back:

Projector: Espon EB L255F

Screen: 290 x 210 cm

Both inputs for projectors are on stage via HDMI

Available Backline:

- Drums:** Premier Artist Birch 22", 10", 12", 14"
Color: Solid Yellow Laquer
Snare: Premier Artist Birch 14"
Hardware: (Premier/Ludwig)
1 x Hihat stand
3 x snare stands
6 x div. Cymbal stands
1 x Tama tam holder on stand
1 x Premier tom holder
2 x bass drum pedals
- Guitar:** 1x Vox AC30C2 30watt 2x12"
1x Fender 65 Twin Reverb 85watt 2x12"
- Bass:** 1x Ampeg SVT-CL Classic 300w all tube
1x Ampeg SVT410HLF 4x10"
1x Ampeg horn cabinet 15"
- Stands:** 4 x Single Key Stands
4 x Guitar Stands
- DJ Equipment:** 2 x Pioneer CDJ-2000 NXS2
2 x Pioneer XDJ-2000
2 x Pioneer PLX-1000
1 x Pioneer DJM 900 NX2
1 x Pioneer DJM 800

General Info

Backstage: We normally use meeting room 1 upstairs for backstage. Separate stairs and elevator from backstage to side of stage downstairs.

Load In: Load in of equipment from delivery entrance from Youngstorget. Youngs Nede is in the basement of the building. Direct access to elevator from ground floor.

Parking:

Parking in Oslo city center can be hard, and the venue does not have any parking for artists. The venue is not responsible for finding parking for artists playing at Youngs.

Transport: The venue does not provide airport transfer or local transport in Oslo for the artist.

Catering: Available on request, must be confirmed with our booking agent in advance.

Merchandise sales:

The organizer can provide a unmanned booth for selling merchandise at the venue by request. The artist must provide a person to sell the merch themselves.

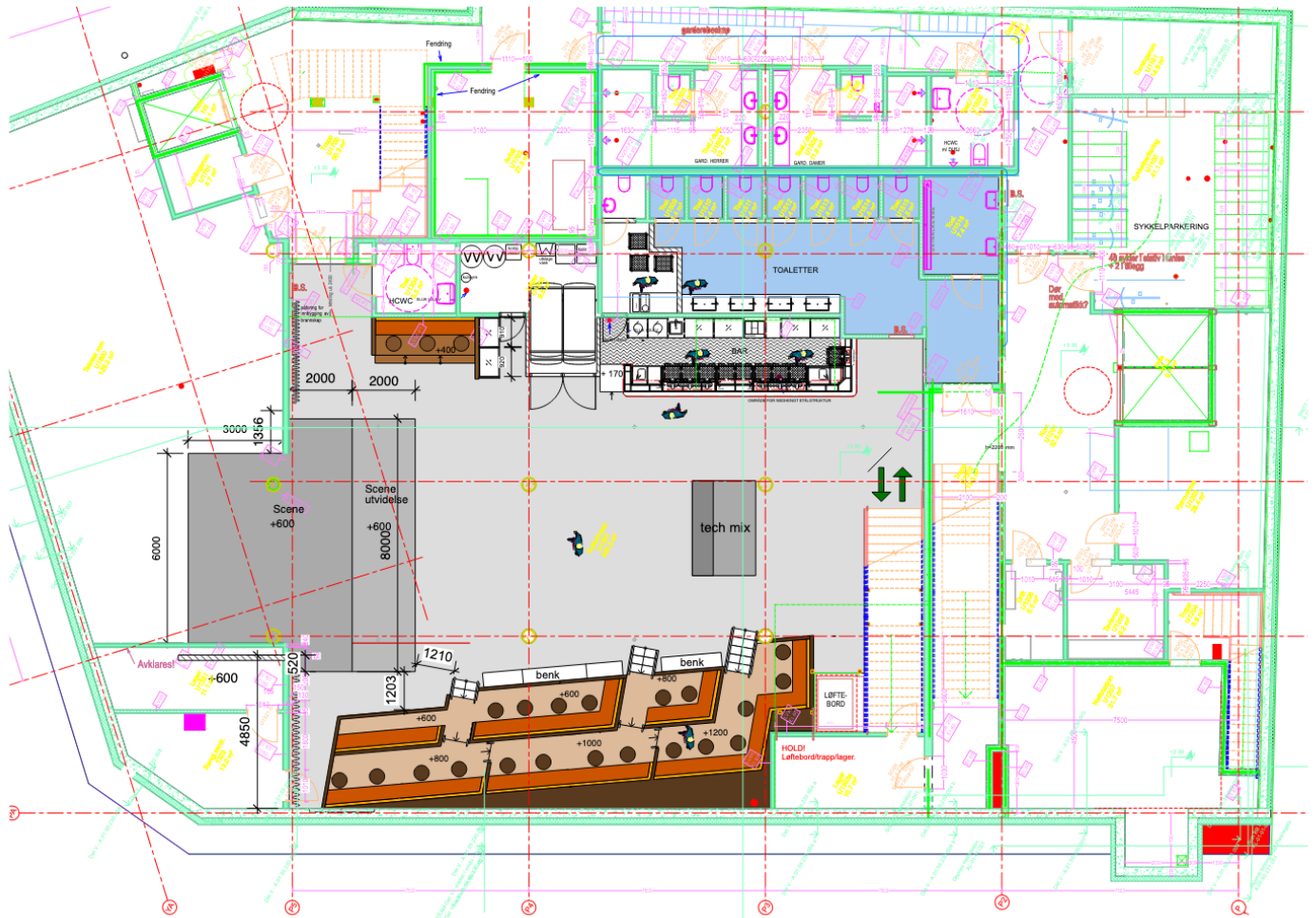
Getting there:

Youngs is situated at the Youngstorget square in central Oslo. The venue address is Youngstorget 3, a quick 5 minute walk from the transport hub at Oslo S.

Drive times from Oslo Airport Gardermoen are 40 minutes. Airport Express trains leaves from Airport every 20 minutes, and takes about 20 minutes. Local trains are cheaper and takes about 33 minutes from Oslo Airport to Oslo Central Station.

Local trains leave typically once every hour.

Floor Blueprint:



Lighting Patch 1/5

Fixture	Mode	Address	Note
Snow 350 Hybrid	Person 2	2.001	Stage
Snow 350 Hybrid	Person 2	2.026	Stage
Snow 350 Hybrid	Person 2	2.051	Stage
Snow 350 Hybrid	Person 2	2.076	Stage
Snow 350 Hybrid	Person 2	2.101	Dancefloor
Snow 350 Hybrid	Person 2	2.126	Dancefloor
Snow 350 Hybrid	Person 2	2.151	Dancefloor
Snow 350 Hybrid	Person 2	2.176	Dancefloor
Snow 350 Hybrid	Person 2	2.201	Dancefloor
Snow 350 Hybrid	Person 2	2.226	Dancefloor
Snow 350 Hybrid	Person 2	2.251	Dancefloor
Snow 350 Hybrid	Person 2	2.276	Dancefloor

Lighting Patch 2/5

Fixture	Mode	Address	Note
Phantom 180 Wash	29Ch Mode	1.095	Front wash
Phantom 180 Wash	29Ch Mode	1.124	Front wash
Phantom 180 Wash	29Ch Mode	1.153	Front wash
Phantom 180 Wash	29Ch Mode	1.182	Front wash
Phantom 180 Wash	29Ch Mode	1.211	Front wash
Phantom 180 Wash	29Ch Mode	1.240	Front wash
MH-Z195	15Ch Mode	1.277	Stage Wash
MH-Z195	15Ch Mode	1.292	Stage Wash
MH-Z195	15Ch Mode	1.307	Stage Wash
MH-Z195	15Ch Mode	1.322	Stage Wash
MH-Z195	15Ch Mode	1.337	Stage Wash
MH-Z195	15Ch Mode	1.352	Stage Wash

Lighting Patch 3/5

Fixture	Mode	Address	Note
Atomic 3000	4Ch Mode	1.269	Stage strobe
Atomic 3000	4Ch Mode	1.273	Stage strobe
Blinders	1Ch Dimmer	1.001	Stage
Blinders	1Ch Dimmer	1.002	Stage
Blinders	1Ch Dimmer	1.003	Stage
Blinders	1Ch Dimmer	1.004	Stage
Blinders	1Ch Dimmer	1.005	Stage
Blinders	1Ch Dimmer	1.006	Stage
Tour Hazer II	2 Channel (Fan, Haze)	1.511	Stage

Lighting Patch 4/5

Fixture	Mode	Address	Note
SnowPar Pro tri 18	6Ch mode	2.302	Seating
SnowPar Pro tri 18	6Ch mode	2.308	Seating
SnowPar Pro tri 18	6Ch mode	2.314	Seating
SnowPar Pro tri 18	6Ch mode	2.320	Seating
SnowPar Pro tri 18	6Ch mode	2.326	Seating
SnowPar Pro tri 18	6Ch mode	2.332	Seating
SnowPar Pro tri 18	6Ch mode	2.338	Seating
SnowPar Pro tri 18	6Ch mode	2.344	Seating
SnowPar Pro tri 18	6Ch mode	2.350	Seating
SnowPar Pro tri 18	6Ch mode	2.356	Bar
SnowPar Pro tri 18	6Ch mode	2.302	Bar
SnowPar Pro tri 18	6Ch mode	2.308	Bar
SnowPar Pro tri 18	6Ch mode	2.314	Bar

Lighting Patch 5/5

Fixture	Mode	Address	Note
SnowPar Pro tri 18	6Ch mode	2.362	Optional Floor Package
SnowPar Pro tri 18	6Ch mode	2.368	Optional Floor Package
SnowPar Pro tri 18	6Ch mode	2.374	Optional Floor Package
SnowPar Pro tri 18	6Ch mode	2.380	Optional Floor Package
SnowPar Pro tri 18	6Ch mode	2.386	Optional Floor Package
SnowPar Pro tri 18	6Ch mode	2.392	Optional Floor Package